

Jensen Digital negative holder for Durst enlargers.

DigiPro 812VS



Evolution



Innovation

Negative -> Digital -> Paper
Fully automatic
The system for your digital picture production



Distributed in the United States by
world images digital



Portraits, packages, and group images are printed in sorted order.



Punches and laminating units are available for sticker production.

Design your own greeting cards for any occasion!



Scan Station:

Scanner
- Film types: 35 mm negative and positive, APS
- Resolution: max. 2000 x 3000 Pixel (35mm)
1714 x 3000 Pixel (APS)
- Capacity: max. 1250 Scans/h
- Including scratch and dust removal

PC
- Model: Pentium PC
- Operating system: Windows 2000
- Drives: Floppy, CD-ROM, card reader

- Scan software

Technical specifications:

Printer :
- Digital printer with a resolution of 7.7 mil. pixel.
- Paper sizes: 3.5 x 5 - 12 x 18"
- Resolution: 270 - 640 dpi
- Capacity: max 1450 prints/hr.
- Printed using a high resolution LCD display
- Infinite automatic paper size setup
- DigiLab controller with job management
- Back print

Processor :	S	HS	SHS
- Quick developer	2002 S		
- Replenishment is micro processor controlled			
- All models are also available for b/w production!			
- Process:	RA4	RA4	RA4
- Speed:	1.5/1.9 min	2.4 min	3.2m/ min
- Processing time dry to dry:	3.5/4.5 min	4.5 min	
- Max capacity:			
3.5 x 5"/hr.	600	960	1450
8 x 10"/hr.	300	500	700

PC:
- Model: Pentium PC
- Operating system: Windows XP
- Drives: Floppy, CD-ROM, Card-reader
- Scanner for picture-from-picture production
- Software for imaging
- Adobe Photoshop

Options:
- Normal light lamp
- Workstation including software for Mac or PC
- Picture composer software for designing group images

Distributor in the US:



1600 NE 25th Avenue, Hillsboro, OR 97124
Phone: 503 846 1492, Fax: 503 640 1878
E-mail: sales@world-images-digital.com
www.world-images-digital.com

Use it on:
Durst L1200
Durst L138S with CLS1000
Durst L184 with CLS 1840 and CLS2000
Durst L184 with CLS 300 and CLS301 via adapter.
Durst L1840 with CLS 1840 and CLS2000
Durst HL2500, HL2501AF and HL2506AF.

You can switch between Optical (Analog) and Digital Printing in less than 30 seconds.

How to install the Jensen digital negative holder:

- Remove your regular Durst mixing box
- Remove the negative holder
- Install the Digital Mixing box with integrated negative holder
- Plug in the networking cable
- Set the Yellow filter dial to 30CC, set the Cyan, Magenta and Density dials to OCC

The installation process takes less than 30 seconds. No tools are needed.

The new Jensen digital negative holder installs exactly like the existing mixing boxes on the enlarger.

How to work with the Jensen Digital Negative holder:

The digital negative holder can receive digital files from any PC/Mac computer and from a Müllersohn, Agfa, Kodak, Fuji Frontier minilabs, and work stations.

It can work automatically with existing image management software, or manually in a standard darkroom setting.

The computer controlling the digital negative holder can be placed next to the enlarger, in another room, or in another country. The digital negative holder is "networking", and can receive its signal over any network as long as image software is installed on the computer sending the signal. If you use a roll easel on your enlarger, you can create automatic operation.

The digital negative holder can receive its signal from any other computer controlled minilab, or from the DigiPro 812VS image software, which can load up to 36 images on the screen. These images can be corrected and cropped individually, all at once, or in selections. Cropping, density, and color corrections take place directly on the computer screen. While you manipulate a given image, the original image is maintained next to the one being corrected for comparison.



Use the digital negative holder to print enlarged:

- Calendars
- School Photography packages
- Index prints
- Greeting cards with individualized text
- Posters with text
- Enlarged contact sheets

It is limited only by your creativity and Photoshop, or any other image manipulation software, including Adobe Pagemaker and similar programs.

The Jensen digital negative holder prints any image on:

- BW fiber base paper
- BW RC Coated paper
- Color negative paper RA4 process

Exposure times are approx twice as long as the exposure times you normally work with. The digital negative holder can work with lenses from 50mm to 105 mm and can produce prints up to 28x30" without quality loss.

After the images, that you want to print, are ready on the computer; you hit the expose button and then you move into the darkroom.

In the darkroom, you simply:

- Push the white light button
- Choose print size
- Focus
- Place the paper on the easel
- Expose
- Process

Jensen Digital negative holder supplied by:
world images digital
1600 NE 25th Ave, Hillsboro, OR 97124
Phone: 503 846 1492, Fax: 503 640 1878
E-mail: sales@world-images-digital.com
www.world-images-digital.com

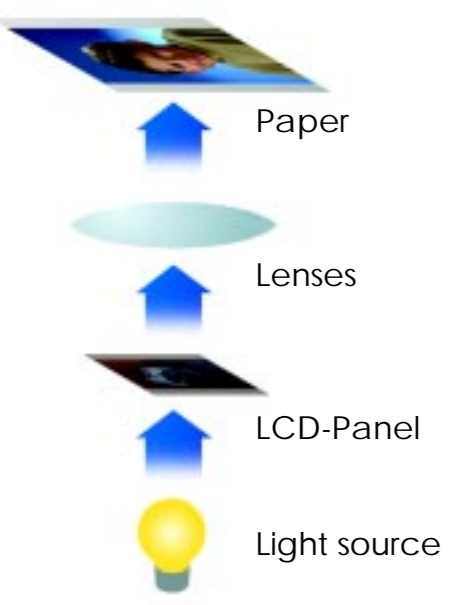


Any input media can be used. It is easy to print from the internet, floppy, any memory card, CD-ROM, SD or any other storage media.

The ideal system for your business!

The DigiPro 812VS is a digital lab with a simple user interface and perfected, service-friendly technology. You can print on paper sizes of 3.5 x 5" up to 12 x 18" on standard RA4 paper. This makes the process very price efficient.

A high-speed negative and APS scanner can be integrated to digitize negatives, print pictures, and burn to CD-ROM.



Printing on standard photo paper using a high resolution LCD-Panel

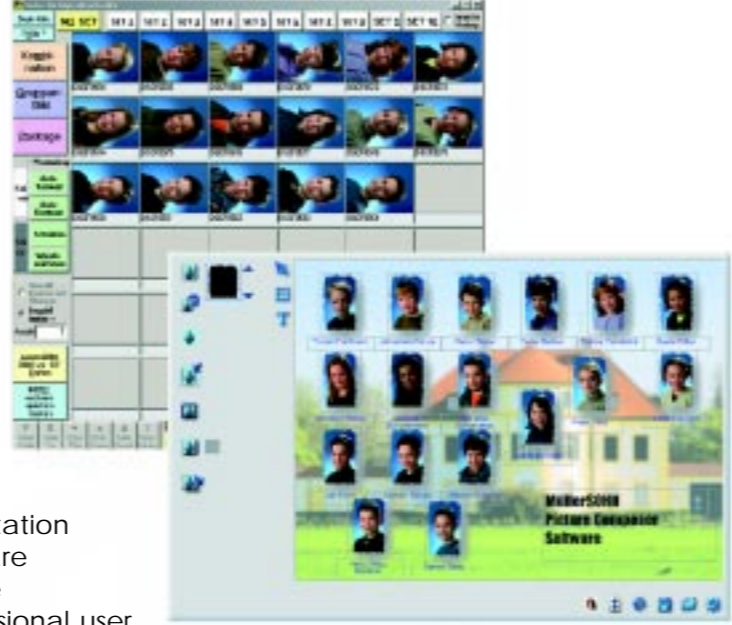
You can use any photographic paper; it does not matter if it is glossy, matte, metallic, or has any other surface.

All papers for the RA4 or b/w process can be used by the DigiPro 812V.

With the LCD-printing unit developed by Müllersohn, your pictures can be printed with a resolution up to 640 dpi (3.5 x 5").

Extendable System

The computer controlling the printer can be connected to an existing network with a speed of up to 1000 Mbit/sec. Workstation software is available for Mac OS and Windows, so you can prepare your pictures on different computers and print them in advance.



Workstation software for the professional user.

Special software for your business

You can use the Müllersohn software in any segment of photography, like amateur, advertising, industry or school and kindergarden photography.

You have the ability to produce multiple customized products like business cards, invitations, and greeting cards.

You can put together packages, portraits, and group images into sets to automate your workflow.

Extraordinarily well-suited for school- and kindergarden-photography: specialized software, the "picture composer", available for designing group photos.



Create your own products in an open system, to fulfill your needs, and the requests of your customers.



DigitalLabor

The DigitalLabor is a fully digital, high production roll-to-roll printer for printing all types of professional and amateur work.

Müllersohn Digital Printers combine ease-of-use and extraordinary print quality by integrating Windows/Mac network protocols and drivers with true photographic processing.

The Müllersohn software is built on top of common Windows and Mac formats. This means the operator has an established palette to work with, a sophisticated interface, and absolute control over the images before they are printed.

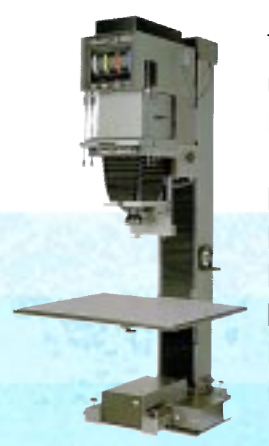
Flexibility

The Müllersohn system is extremely flexible; it can be combined with your own existing equipment in an unlimited number of ways in order to provide each customer with a system custom fit to work with his or her individual needs.

Use any PC / MAC or other minilab work station.



+ your processor



The unit can be used with most Durst enlargers:

- L 1200
- L 138 SP
- L 184
- L 1840 (shown)
- HL 2501 AF
- HL 2506 AF



A digital unit of your choice can also be used.

The Müllersohn digital system can network with existing minilabs, other workstations and optical enlargers. You can use the Müllersohn printer as a complete "dry to dry" minilab or as a "stand alone" solution with your own processor. Whatever your need we can find a solution.